



Engineering
services for
an improved
environment

Office: 0845 1949200

Email: sales@wilkinson-env.co.uk

Website: www.wilkinson-env.co.uk



Contents

- /// Drain Tracing & Mapping
- /// Emergency Blockage Removal
- /// Specialist Obstruction Removal
- /// Directional Water Cutting
- /// Oil Interceptor Cleaning
- /// Pumping Station Maintenance
- /// Soil & Water Analysis
- /// Road Sweepers
- /// Pipeline Pressure Testing
- /// Flood Prevention Works
- /// Sewer Repairs
- /// New Sewer Connections
- /// Landscaping
- /// CCTV Surveys to Water Authority Standards
- /// 4x4 CCTV Surveys & Sewer Cleansing
- /// Man-Entry & Working in Confined Spaces
- /// Pollution Investigation & Control
- /// Rotary Root Cutting
- /// Sewer Cleansing
- /// Tanker Vacuumation
- /// Civil Engineering & Ground Works
- /// Commercial & Domestic Building Works
- /// Drainage Installation & Maintenance
- /// HADDMS Surveys
- /// Rapid Set Concrete Solutions
- /// Recycling Jet Vacs
- /// Car Parks & Surfacing
- /// CIPP, UV and GRP Drain Lining
- /// Epoxy Patch Repairs
- /// Pitch Fibre Re-Rounding
- /// Top Hat Lateral Repairs

Office: 0845 1949200

Email: sales@wilkinson-env.co.uk

Website: www.wilkinson-env.co.uk

Drain Tracing and Mapping

With the use of various Sonde Transmitters Wilkinson Environmental Ltd can accurately trace the lines of non-metallic drains and ducts. Having a wide range available we can ensure that the most suitable transmitter is used to suit its purpose.

The transmitter is attached to our CCTV equipment and is inserted into the line. Once a problem such as a sewer collapse or blockage is discovered, an accurate position and depth of the problem can be obtained and marked using the suitably tuned receiver above ground.

This is a reliable and efficient service which is extremely useful in assisting repairs that require an open cut excavation.

Existing drainage can be surveyed and then accurately plotted onto plans for the clients information.



« Contents

Office: 0845 1949200

Email: sales@wilkinson-env.co.uk

Website: www.wilkinson-env.co.uk

Emergency Blockage Removal

Wilkinson Environmental Ltd has a large range of blockage vehicles on 24hr standby for a fast and efficient emergency service.

With a large fleet of specialist blockage and sewer cleansing vehicles, from van pack units to high-volume sewer cleansing units all based in the midlands, Wilkinson Environmental is perfectly located to attend a wide geographical area, providing a fast and effective emergency blockage service to all domestic, commercial and industrial customers.



« Contents

Office: 0845 1949200

Email: sales@wilkinson-env.co.uk

Website: www.wilkinson-env.co.uk

Specialist Obstruction Removal

Wilkinson Environmental Ltd has built up a wealth of experience in removing obstructions that most other contractors walk away from and say cannot be removed.

If you have an obstruction in a sewer line that is too difficult or too deep to carry out an open excavation on, and everyone is telling you that it cannot be removed, then give Wilkinson Environmental a call. We can remove a variety of obstructions including the following:

- Full house bricks from 6" sewers upwards
- Drain rods lost down connections that are intruding into main sewers
- Intruding connections which impair flows
- Drain stoppers that have been left in the sewer by a contractor after repairs
- Displaced jointing rings
- Big obstructions in large culverts

« [Contents](#)



Office: 0845 1949200
Email: sales@wilkinson-env.co.uk
Website: www.wilkinson-env.co.uk

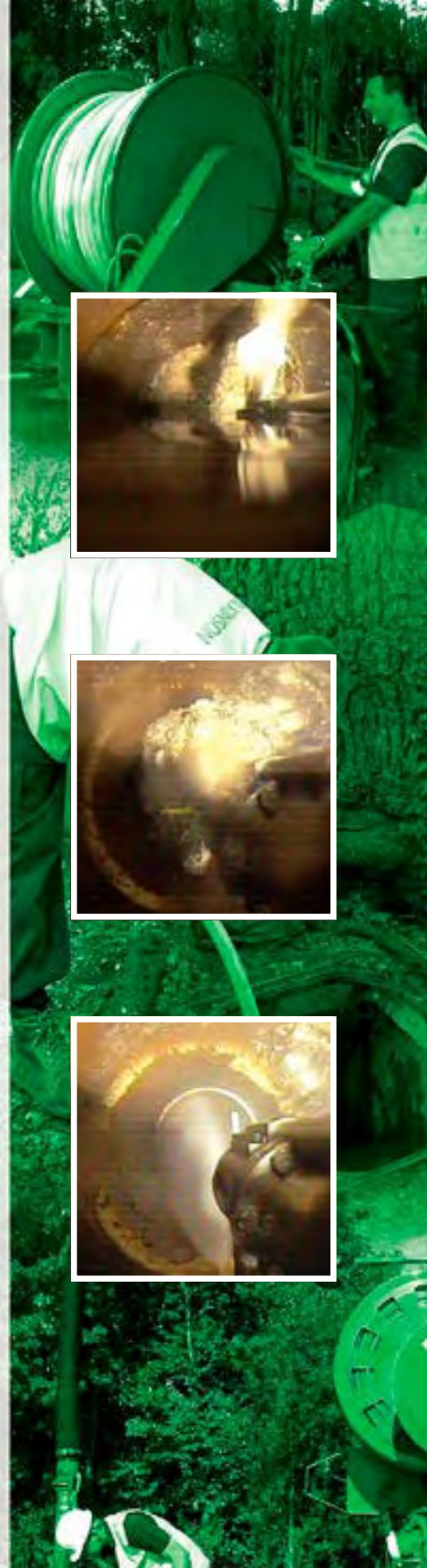
Directional Water Cutting

Wilkinson Environmental Ltd has one of the only single entry directional water cutters in the county, capable of cutting through the most stubborn obstructions.

The directional water cutter uses 40,000psi at 88Lpm through a single pencil nozzle, delivering astonishing cutting power. The single entry unit can be driven down to any obstruction and the unit will easily cut through large tap roots and root mass, which normal mechanical cutters cannot remove.

It can also handle intruding connections and heavy deposits of concrete up to 50 N/mm² strong in any size pipe work, from 100mm to 1,000mm. It is also capable of dealing with up to 40% deformities in sewer lines, which sets it aside from most other cutting units.

« [Contents](#)



Office: 0845 1949200
Email: sales@wilkinson-env.co.uk
Website: www.wilkinson-env.co.uk

Oil Interceptor Cleaning

Wilkinson Environmental Ltd has a range of vehicles and an experienced team dedicated to cleansing oil interceptors.

Oil separators are fitted to surface water drainage systems to prevent pollution by oils and to protect the environment. Oil separators separate oil from water, retaining oil safely until it is removed.

Oil separators need to be correctly maintained to be fully effective. Wilkinson Environmental can carry out a full-site investigation, from taking samples through to the disposal of the contaminated water.



« Contents

Office: 0845 1949200

Email: sales@wilkinson-env.co.uk

Website: www.wilkinson-env.co.uk

Pumping Station Maintenance

Wilkinson Environmental Ltd is at the forefront of pumping station maintenance and cleansing.

Working for local authorities and water companies, Wilkinson Environmental has cleaned and maintained a variety of pumping stations, including domestic and commercial.

Using fully qualified and dedicated engineers, we provide a service of planned preventative maintenance, along with emergency response for sewage, storm and freshwater pumps, regardless of their make or design.

« Contents



Office: 0845 1949200
Email: sales@wilkinson-env.co.uk
Website: www.wilkinson-env.co.uk

Soil & Water Analysis

Wilkinson Environmental Ltd offers a comprehensive soil, water chemical and microbiological analytical service.

The range of expertise and combined experience of our staff, in conjunction with our quality management systems, ensures a service of the highest professional and technical standard.



« Contents

Office: 0845 1949200

Email: sales@wilkinson-env.co.uk

Website: www.wilkinson-env.co.uk

Road Sweepers

Wilkinson Environmental Ltd can provide road sweeping services to industrial, commercial, construction, civil engineering and utility companies.

With a large range of sweepers from walk-behind sweepers and scrubbers to compact, mid and truck-mounted road sweepers, Wilkinson Environmental can provide its customers with a sweeper to cover any job, large or small.



« Contents

Office: 0845 1949200

Email: sales@wilkinson-env.co.uk

Website: www.wilkinson-env.co.uk

Pipeline Pressure Testing

Wilkinson Environmental Ltd can provide air and water testing to a variety of pipe work and pressurised systems, including rising main and gravity sewers.

After the installation or repair of any drain or pipeline system it should be tested for leaks. Newly laid and existing drainage systems can be tested by a variety of means from air testing to water testing on both positive and negative pressure tests on any size pipe.

Pull through stoppers can also be used to isolate sections of pipe work to determine which joint is leaking.



« Contents

Office: 0845 1949200

Email: sales@wilkinson-env.co.uk

Website: www.wilkinson-env.co.uk

Flood Prevention Works

Wilkinson Environmental Ltd specialises in the protection of properties and developments from the risk of flooding.

Due to the increase of development and changes in weather patterns over recent years, flooding from over-loaded sewer systems is now an unfortunate and common occurrence.

Working with utility companies and local authorities, we have developed many cost effective applications to protect properties at risk. Flood protection can be provided in many different forms, from flood barriers, sewer diversions, surface water removal and valves to prevent backflow from surcharging sewers; all solutions are bespoke to individual requirements.

If you are concerned your property may be at risk, or you have already experienced damage and costly flooding, please do not hesitate to contact us for advice and a 'no obligation' quotation.



« Contents

Office: 0845 1949200

Email: sales@wilkinson-env.co.uk

Website: www.wilkinson-env.co.uk

Sewer Repairs

Wilkinson Environmental Ltd specialises in all aspects of sewer rehabilitation, from open-cut excavations to repairing sewers of all sizes, depths and locations.

Our highly qualified and experienced crews can provide open-cut solutions for any situation.

Our crews carry out sewer repairs for local authorities, utility companies, commercial clients and domestic customers. We can offer quotations and advice for all repairs, regardless of the type of sewer.

We can repair sewers on both private land and highways, in accordance with the New Roads and Streetworks Act 1991.

Repairs can be carried out on gravity, pressurised or pumping systems and you can always be assured of a quick, cost effective and professional service.

« Contents



Office: 0845 1949200

Email: sales@wilkinson-env.co.uk

Website: www.wilkinson-env.co.uk

New Sewer Connections

Wilkinson Environmental Ltd can provide you with a 'free of charge and no obligation' quotation for new sewer connections.

If you are a private developer or large building company, we can connect your development with a main-line sewer. This service may involve a standard connection into a main sewer within an adjacent highway, or a more complicated pumping system or bio-treatment system.

Whatever your requirements, we can provide professional advice and liaise with the relevant utility company or local authorities on your behalf.

« Contents



Office: 0845 1949200

Email: sales@wilkinson-env.co.uk

Website: www.wilkinson-env.co.uk

Landscaping

Wilkinson Environmental Ltd offers a complete hard and soft landscaping service for domestic and commercial customers.

Whether you would like a quote to improve your own property with decking or a new patio, or you are simply looking to improve the overall appearance of an industrial unit or park, we can offer a tailor-made proposal to suit your needs.

Our in-house design team can provide a complete project overview, including visuals to compliment our advice. This valuable service allows our customers to visualise a true representation of the end result.

For advice and a 'free of charge' quotation, please do not hesitate to contact us.



« Contents

Office: 0845 1949200

Email: sales@wilkinson-env.co.uk

Website: www.wilkinson-env.co.uk

CCTV Surveys to Water Authority Standards

Wilkinson Environmental Ltd provides CCTV surveys, investigations and mapping services on all pipe work from 40mm in diameter upwards. It is a cost effective method of locating drainage problems such as structural defects, hydraulic deficiency and cross contamination.

We continually strive to improve and invest in the most up to date technology in this rapidly changing industry, allowing us to deliver the most accurate and cost effective service to our clients.

Surveys are either performed with a motorised or push-along camera through the length of the defective pipe work. This is recorded onto VHS videotape, CD Rom or DVD depending on the clients' preference.

All surveys are professionally coded with our WINCAN software to Water Authority Standards - WTI 0S20x. Any necessary corrective works are highlighted within the report and our engineers are on hand to advise upon the most appropriate course of action. Whether sewer cleansing, pipe lining, root cutting or open cut excavation is required, we are sure to find the best possible solution. All quotations are supplied free of charge with no obligations.

« Contents



Office: 0845 1949200

Email: sales@wilkinson-env.co.uk

Website: www.wilkinson-env.co.uk

4x4 CCTV Surveys and Sewer Cleansing

Wilkinson Environmental Ltd is capable of performing CCTV Surveys and High Pressure Water Jetting in virtually any location.

With the use of specialised 4x4 vehicles, agricultural vehicles, remote hose reels and specialised access solutions, High Pressure Water Jetting and Tanker Vacuumation can be carried out on the most difficult of ground conditions.

Having portable mainline CCTV systems we are able to carry out surveys in the remotest of locations. This method requires only two men to carry the equipment, ensuring that no site is inaccessible.

These services are being used more frequently by our clients in emergency situations, where sewer blockages in the countryside could have devastating effects if an appropriate and effective service is not provided. Our dedicated 4x4 vehicles are on hand throughout the year.

Whether it be railways, countryside or more sensitive ground such as sports playing fields requiring minimal disruption, we are confident that we can provide off road services to suit any terrain.

« Contents



Office: 0845 1949200

Email: sales@wilkinson-env.co.uk

Website: www.wilkinson-env.co.uk

Man-Entry and Working in Confined Spaces

The most effective method of cleansing or surveying wet wells, large interceptors, large diameter sewers and other large vessels is by man-entry.

At Wilkinson Environmental Ltd, all our operatives are fully qualified in entering, travelling and working in confined spaces. With the use of specialised breathing apparatus and permanent gas detection equipment, our well experienced operatives can carry out work safely and efficiently, ensuring attention to health & safety at all times.

As well as the cleansing and surveying of wet well and large vessels, we also specialise in the installation of apparatus within large diameter sewer systems.

We are confident that whatever your requirements for work within confined spaces, Wilkinson Environmental Ltd will be able provide you with a quality and safe service.



« Contents

Office: 0845 1949200

Email: sales@wilkinson-env.co.uk

Website: www.wilkinson-env.co.uk

Pollution Investigation and Control

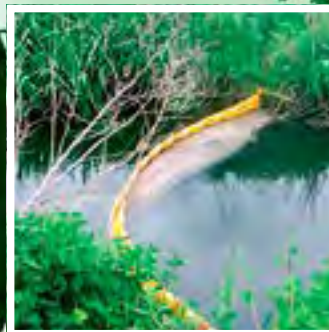
Wilkinson Environmental Ltd provides an emergency response service for the control and clean-up of inland water pollution incidents.

Our rapid response teams are on 24hr standby for chemical spillages, internal and external flooding incidents.

Dedicated vehicles come complete with spill kits, oil retention booms and oil absorption materials. We also have mobile oil interceptors and pumping equipment on constant standby should over pumping be required.

In the event of pollution incidents, Wilkinson Environmental Ltd provides an experienced team to carry out a full investigational service. We offer a detailed report of the incident specifying possible causes and appropriate solutions.

Wilkinson Environmental Ltd is committed to the protection of the environment and to providing a comprehensive range of high standard services to our customers.



« Contents

Office: 0845 1949200

Email: sales@wilkinson-env.co.uk

Website: www.wilkinson-env.co.uk

Rotary Root Cutting

Rotary Root cutting is an effective and low cost solution for prolonging the life of drainage systems. It can be utilized for the removal of heavy root infestation; cement wash, lime scale and fat build up.

The cutter is supplied with a high-pressure jet vac unit, which powers it along the line. Once the blockage has been cleared, a water jet is used to remove all debris from the pipe. The result is effective and immediate cleansing with no damage being caused to the existing pipe work.

The cutters are capable of working under difficult conditions such as displaced joints and deformed pipes. Wilkinson Environmental Ltd provides highly skilled operatives ensuring that the work is carried out correctly, safely and to the customer's satisfaction.

« Contents



Office: 0845 1949200

Email: sales@wilkinson-env.co.uk

Website: www.wilkinson-env.co.uk

Sewer Cleansing

High pressure water jetting is an immediate and cost effective way of cleaning and maintaining pipelines and drainage systems. It can reduce the need for disruptive excavation work in order to clear blockages.

The high pressure water jetting unit can remove blockages where excavations would not be possible.

Jetting is suitable for pipe work sizes ranging from 100mm up to 2,000mm in diameter, and if carried out regularly can greatly improve the life span of pipelines and drainage systems.

Wilkinson Environmental Ltd can provide a variety of units from high volume machines up to 90gpm performance, to high-pressure machines capable of up to 40,000psi.

Our units boast a rear mounted hydraulic jetting reel with over 200 metres of hose as standard. All units are supplied with jetting nozzles ranging from blockage nozzles, bomb jets to silt jets and spinning jets. With our wide range of equipment, Wilkinson Environmental Ltd guarantees that all blockages and cleansing works are carried out as efficiently as possible.

« Contents



Office: 0845 1949200

Email: sales@wilkinson-env.co.uk

Website: www.wilkinson-env.co.uk

Tanker Vaccumation

Wilkinson Environmental Ltd provides an efficient tanker vaccumation service, which can cater for any liquid waste collection and disposal needs.

Our experienced staff can assist in the cleaning and maintenance of wet wells and pumping stations. Wilkinson Environmental Ltd offers a 24hr call out service for emergency incidents, such as the failure of pumping stations and flooding incidents.

We also offer a range of specialist services from emptying and cleaning of fuel interceptors to domestic septic tanks and cess pits.



« Contents

Office: 0845 1949200

Email: sales@wilkinson-env.co.uk

Website: www.wilkinson-env.co.uk

Civil Engineering & Ground Works

Wilkinson Environmental Ltd provides a full range of civil engineering services that cater for all types and sizes of projects.

Wilkinson Environmental specialises within the civil engineering and groundworks sector and has a directly employed labour force that is fully trained in NRSWA (New Road and Street Works Act); CSCS (Construction Skills Certification Scheme); CPCS (Construction Plant Competence Scheme); First Aid and Confined Space Entry.

We are happy to work on projects of any size, from small domestic extensions and industrial units to warehouses and drainage jobs of any size, type and depth. Tarmac, concrete and all types of finishing works are all completed to a high standard by operatives that take pride in their work.



« Contents

Office: 0845 1949200

Email: sales@wilkinson-env.co.uk

Website: www.wilkinson-env.co.uk

Commercial & Domestic Building Works

Wilkinson Environmental Ltd can assist you in all aspects of your project. With a professional management team and experienced workforce, all projects are completed efficiently.

At Wilkinson Environmental we are happy to offer a design and build service or work with an architect of your choice. We pride ourselves on building relationships with clients and architects alike, which is why our customers come back, time after time.

With our in-house design team we can work alongside our clients to develop their ideas and concepts. Whether it's an extension to a much-loved family home or commercial building, we hold accounts with most major suppliers so can always provide a competitive solution to every project.

« [Contents](#)



Office: 0845 1949200

Email: sales@wilkinson-env.co.uk

Website: www.wilkinson-env.co.uk

Drainage Installation & Maintenance

Wilkinson Environmental Ltd specialises in all aspects of drainage works. Contact us for advice and solutions for all your drainage needs.

We are happy to design and install any type and size of drainage system that may be required. From highways to green-field sites, we have the resources and skills to provide the right solution.

With over 25 years' experience working in the waste water industry we can offer advice and maintenance support on all types of drainage systems as we specialise in CCTV drainage surveys, sewer cleansing, sewer relining, specialist obstruction removal and directional water cutting.

« Contents



Office: 0845 1949200
Email: sales@wilkinson-env.co.uk
Website: www.wilkinson-env.co.uk

HADDMS Surveys

With regards to highways drainage services, knowledge is power.

For cost effective asset management Wilkinson Environmental offers a full range of HADDMS surveys for the Highways Agency, construction, water utilities and civil engineering sectors.

We cover all highways survey requirements including full detail defect surveys, quality CCTV drain surveys, asset condition surveys, validation surveys, connectivity surveys as well as inspection and investigation surveys.

Using the latest cameras and industry software we can remotely survey sewers, culverts and pipework ranging from 25mm to 3 metres wide. All our surveys are compliant with HD43/04 and IAN 147/12 specifications which allows our shape files to be uploaded to the national HADDMS database.

We offer quality reporting as well as sonar survey capabilities. All of our highly trained CCTV surveyors are OX19 qualified and our written reports are coded using the latest Wincan technology.

« [Contents](#)



Office: 0845 1949200

Email: sales@wilkinson-env.co.uk

Website: www.wilkinson-env.co.uk

Rapid Set Concrete Solutions

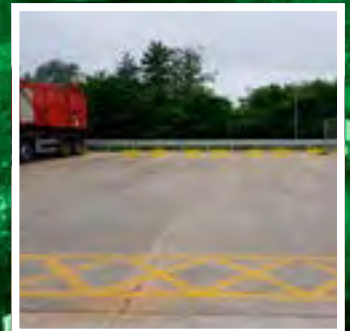
Time critical concrete repair projects?

Rapid Set Cement® is a durable, fast-setting cement with rapid strength gain for new construction, concrete repairs and concrete restoration projects.

It is the perfect choice for time critical jobs within manufacturing and engineering industries and can be used for waste disposal yards, recycling depots, highways, bridges, runways and industrial floors. With its superior durability properties, high strength and low shrinkage, Rapid Set Cement gives you exceptional concrete performance on assorted projects.

Standard industrial concrete sets within 28 days and is 70% cured at seven days. Rapid set concrete solutions can be used for horizontal, vertical and overhead concrete projects and reaches structural strength within one hour.

« Contents



Office: 0845 1949200
Email: sales@wilkinson-env.co.uk
Website: www.wilkinson-env.co.uk

Recycling Jet Vacs

Save time, money and valuable water resources.

With our new fleet of JHL Jet Vac Recyclers we make every drop of water count and deliver cost-effective waste management and drain cleaning solutions. Over the last few years we have invested heavily in our modern fleet which comprises of JHL 206 Recyclers, JHL 312 Recyclers and most recently JHL 414 Recyclers.

As a Warwickshire based drainage company we operate throughout the Midlands and nationwide and are committed to working towards a more sustainable environment by reducing our carbon footprint.

We specialise in all types of sewer cleaning including clearing blocked drains and sewers, root and concrete cutting, tankering, emergency drain blockages and cleaning gullies, soakaways and gullies.

Our recycling Jet Vacs re-use dirty water to clean sewers, enabling us to stay on site for longer and offer better value for money and more efficient solutions to our clients.



« [Contents](#)

Office: 0845 1949200

Email: sales@wilkinson-env.co.uk

Website: www.wilkinson-env.co.uk

Car Parks & Surfacing

Specialising in bespoke schemes, big or small, Wilkinson Environmental have been involved in the civil engineering sector for over 25 years' and have the capacity, knowledge and expertise to deliver timely and cost-effective car parking and surfacing solutions.

From reconfiguring existing car parks and creating parking facilities on brown field sites to giving a new lease of life to worn out tarmacadam our clients liaise with one single point of contact to deliver their project on time and budget.

We work in all industry sectors, here are just some of the areas we cover:

Supermarket car parks

Sports grounds and leisure facilities

New build residential sites

Schools and educational facilities

Industrial sites and complexes

Commercial estate agents

Caravan parks

Retail outlets

Garage forecourts

Achieving results for our clients is paramount, whether they require us to build roads and footpaths, lay kerbs and road junctions with high-quality asphalt or construct, repair and maintain highways.

From planning application to handover, Wilkinson Environmental will guide and assist you through the entire process and deliver high quality and durable surfacing solutions.

« [Contents](#)



Office: 0845 1949200

Email: sales@wilkinson-env.co.uk

Website: www.wilkinson-env.co.uk

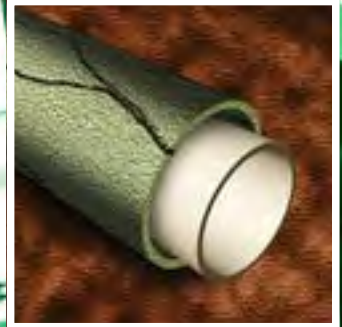
CIPP, UV and GRP Drain Lining

Wilkinson Environmental Ltd specialises in the installation of CIPP (Cured in Place Pipe), UV (Ultra Violet) and GRP (Glass Reinforced Plastic) liners, providing a cheaper solution to open-cut excavations.

These methods offer a permanent structural repair to any sewer from 50mm to 3,000mm, without the need for excavations and major site disruption. The lining can be installed under buildings and applied to domestic, commercial and industrial situations. It can be installed as a single shot entry from a manhole to the main as well as a full-length liner from manhole to manhole. Suitable applications include:

- Foul and storm drainage systems, including all private, S24 and main sewers
- To strengthen culverts and brick barrels
- Strengthening pitch-fibre pipe work after re-rounding
- Prevent root growth after root cutting
- Sealing leaking joints, preventing infiltration and ex-filtration of sewers
- Repair damaged sections of sewer lines bringing a grade 5 sewer back to grade 1
- To cap off redundant or root-filled connections and junctions
- To prevent the erosion and scaling up of cast-iron pipework
- To repair damaged stack pipes both internally and externally
- To improve the hydraulic efficiency of sewer lines

« [Contents](#)



Office: 0845 1949200

Email: sales@wilkinson-env.co.uk

Website: www.wilkinson-env.co.uk

Epoxy Patch Repairs

Wilkinson Environmental offer an Epoxy Patch Repair system designed to achieve a point repair without the need to reline the full length of a sewer.

A fibreglass matting is impregnated with an epoxy resin, which is then secured around an inflatable flow-through packer and allows the sewer to continue operating without the need for over-pumping. The packer is pulled into place and inflated to cover the defective area. A choice of 600mm and 1,000mm patches can be used to repair defects.

This method offers a cheap and efficient system of repair and can be installed in pipework from 100mm to 2,000mm.

Suitable applications for Epoxy Patch Repairs:

- Spot repairs on foul and storm drainage systems, including all private, S24 and main sewers
- Spot repairs in culvert and brick sewers
- Prevent root growth on single joints after root cutting
- Sealing leaking joints, preventing infiltration and ex-filtration of sewers
- Repair damaged sections of sewer bringing a grade 5 sewer back to grade 1
- To cap off redundant or root-filled connections and junctions
- To repair defects within diameter changes

« [Contents](#)



Office: 0845 1949200
Email: sales@wilkinson-env.co.uk
Website: www.wilkinson-env.co.uk

Pitch Fibre Re-Rounding

Wilkinson Environmental Ltd has developed a system for re-rounding deformed pitch-fibre pipes, enabling them to be re-lined.

This system works using two five tonne winches, which pull a specially designed re-round tool through the deformed section of pipe work and forces the pitch fibre pipe to reform and remove any blistering and deformity.

This is carried out three times and then the pipe is flushed out with clean water to remove any debris. A structural CIPP (Cured in Place Pipe) liner is then installed to prevent the deformity and blistering returning.

This is a beneficial system as there is no need to remove existing manholes and the pipeline can be restored to its original shape without the disruption of a costly excavation.



« Contents

Office: 0845 1949200

Email: sales@wilkinson-env.co.uk

Website: www.wilkinson-env.co.uk

Top Hat Lateral Repairs

Wilkinson Environmental Ltd has invested in the latest Top Hat Lateral Repairs systems.

The Top Hat system has been developed to repair faulty/damaged connections and to prevent root growth around the defected connection without the need for costly excavations.

This system is design to work in conjunction with the CIPP (Cured in Place Pipe) lining system but can also be used on its own if the pipework surrounding the defective connection is structurally sound.

In some cases, where poor quality contracts have left the pipework intruding into the main sewer, a hydraulic cutter is required to grind back the intruding connection before the Top Hat can be installed.



« [Contents](#)

Office: 0845 1949200

Email: sales@wilkinson-env.co.uk

Website: www.wilkinson-env.co.uk